

410C01 Quick Start Guide

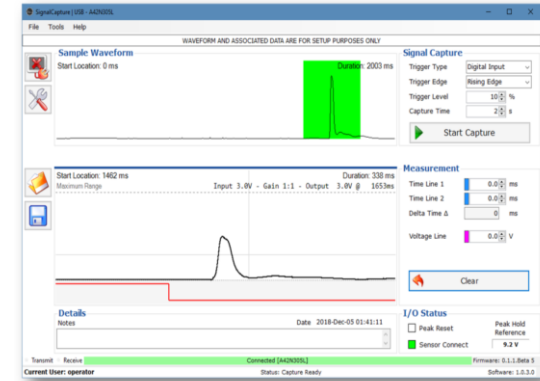
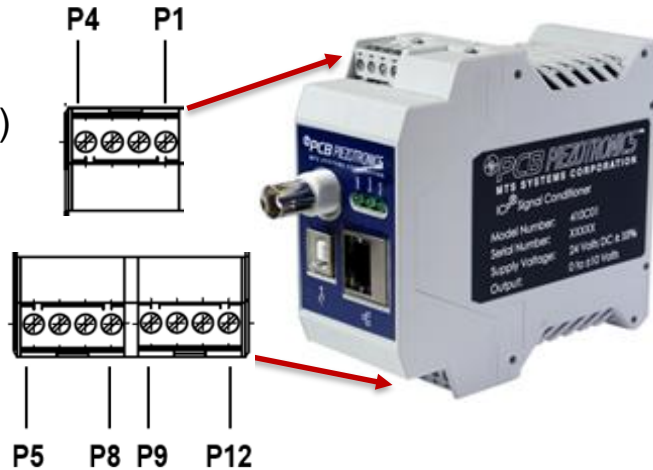


ELECTRICAL WIRING

SOFTWARE INSTALLATION

- Pin 1: Peak Hold Analog Output
- Pin 2: Waveform Analog Output
- Pin 3: Analog Ground (Common)

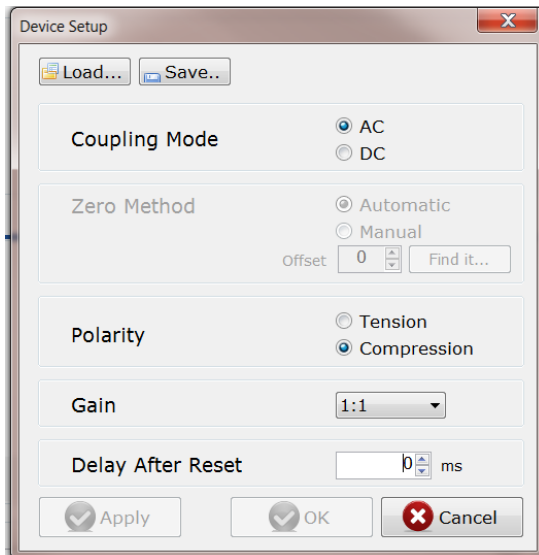
- Pin 7: + Peak Reset
- Pin 8: - Peak Reset
- Pin 10: +24 Volts DC
- Pin 11: Power Ground



Download from: www.pcb.com/410C01

SOFTWARE CONFIGURATION

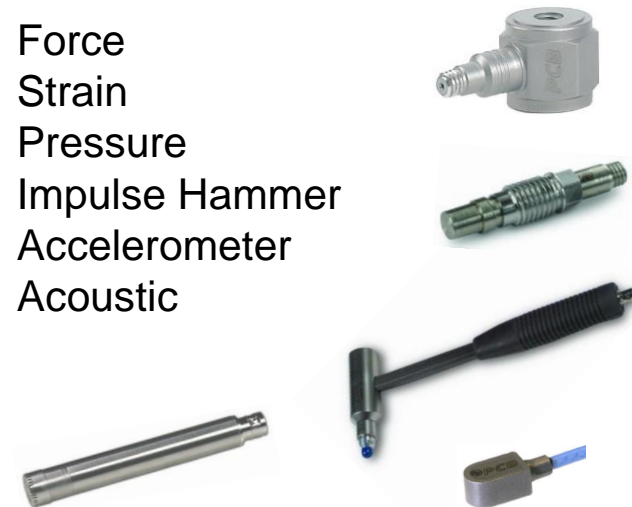
SUPPORTED ICP® SENSOR TYPES



Factory Settings:

- Coupling Mode – AC
- Zero Method – Off in AC mode
- Polarity – Compression
- Gain – 1:1
- Delay After Reset – 0 msec

- ✓ Force
- ✓ Strain
- ✓ Pressure
- ✓ Impulse Hammer
- ✓ Accelerometer
- ✓ Acoustic



410C01 Quick Start Guide



TYPICAL SYSTEM SETUP

