

APPLICATION	USED ON	VAR
NEXT ASSY		

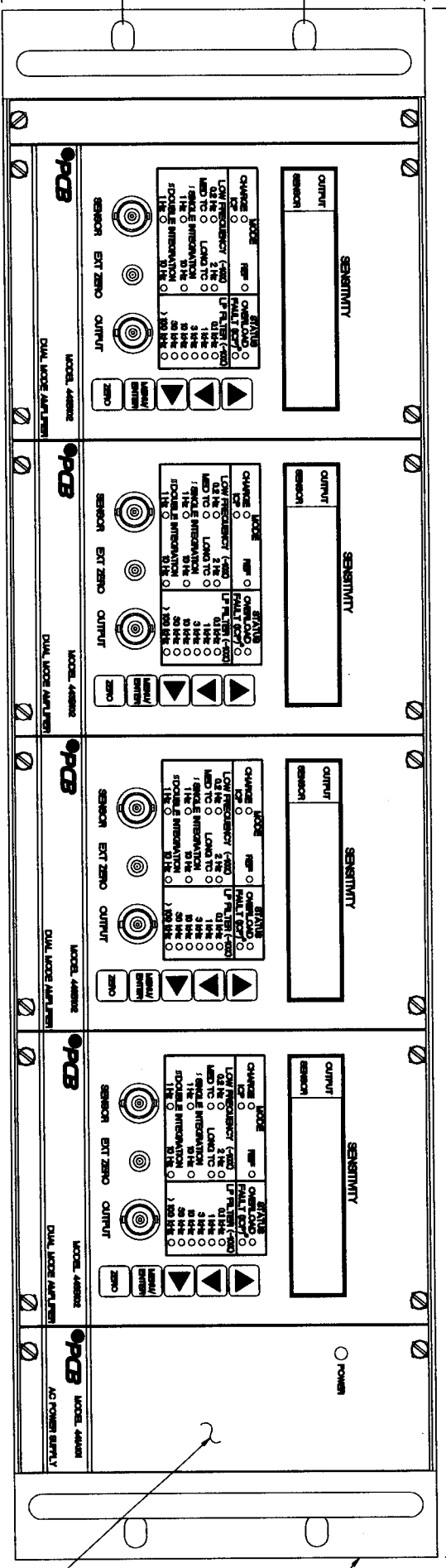
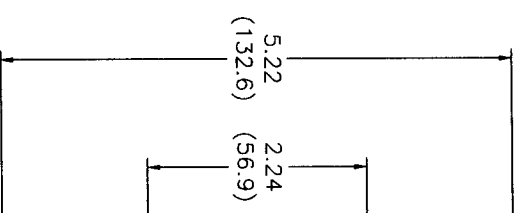
FCB Electronics Inc. reserves proprietary rights in the information disclosed herein. Neither it nor any reproduction thereof will be disclosed to others without written consent of FCB Electronics Inc.

18.96 (481.6)

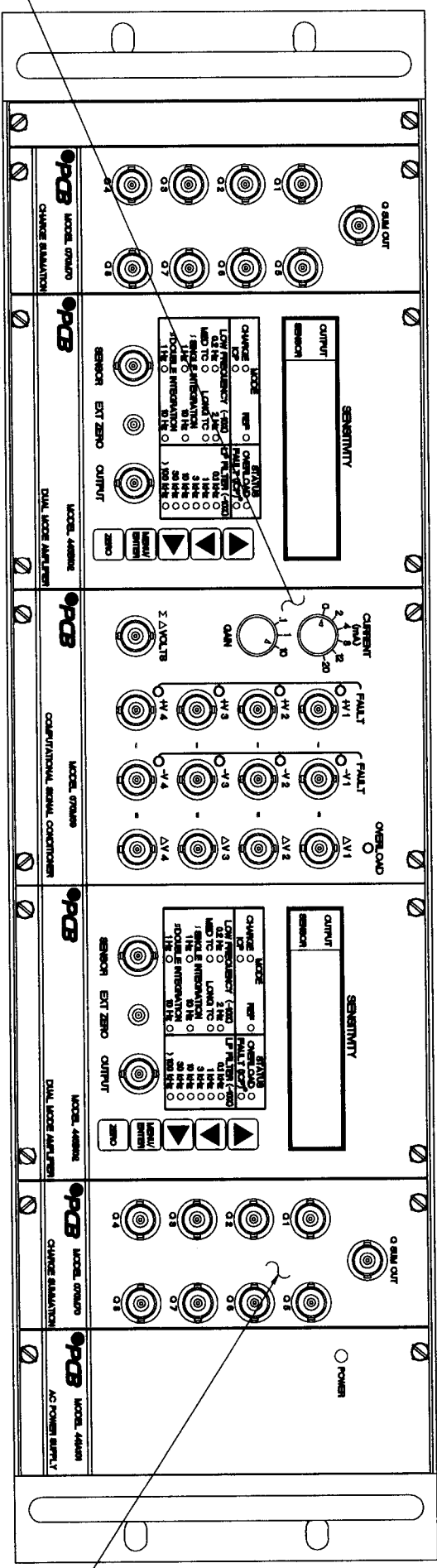
ZONE	REV	DESCRIPTION	ECN	DATE	APP'D
B		"C" TO "D" SIZE DWG FOR BETTER REPRESENTATION.	10042	2/3/99	
C		CHANGED 070M70 TO BNC CONN 118715/16/00			Keyl

REVISIONS

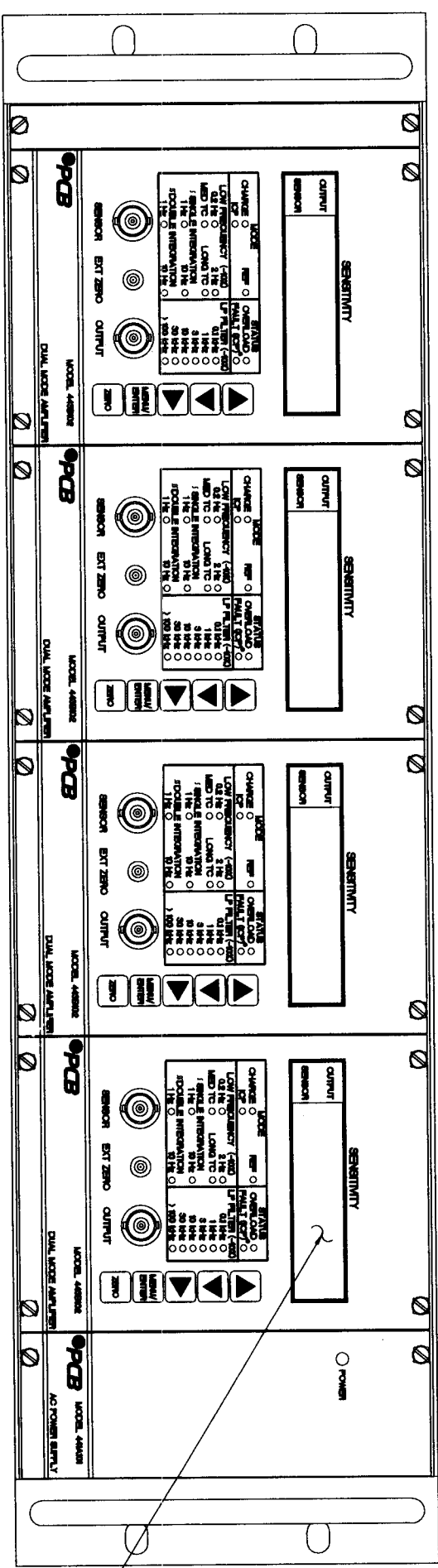
10205



MODEL 441A101  
AC POWER SUPPLY



MODEL 070M70  
CHARGE SUMMATION



MODEL 443B102  
DUAL MODE AMPLIFIER

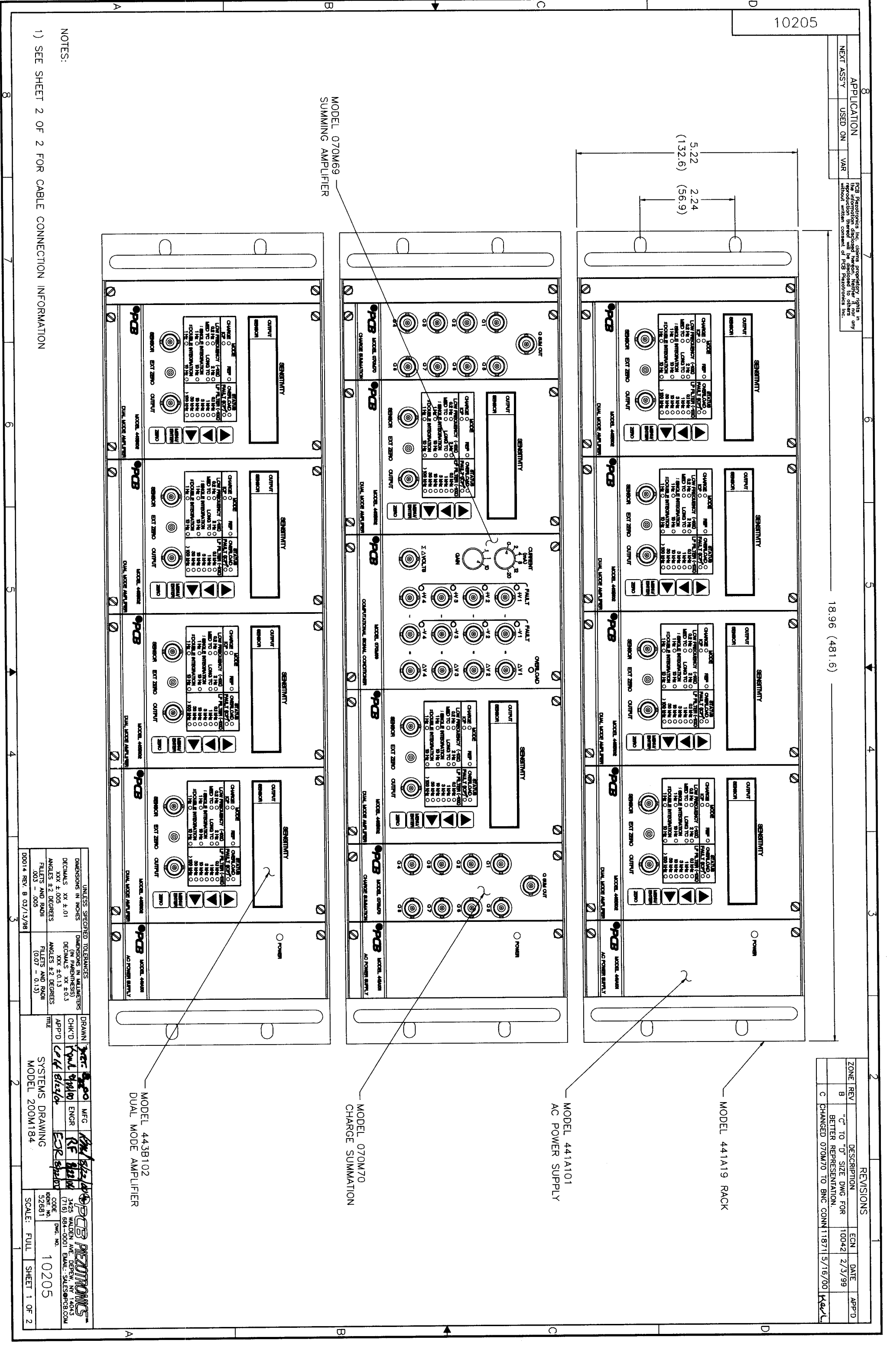
MODEL 070M69  
SUMMING AMPLIFIER

NOTES:

1) SEE SHEET 2 OF 2 FOR CABLE CONNECTION INFORMATION

UNLESS SPECIFIED TOLERANCES	
DIMENSIONS IN INCHES	DIMENSIONS IN MILLIMETERS
DECIMALS XX ±.01	DECIMALS XX ±0.3
XXX ±.005	XXX ±0.13
ANGLES ±2 DEGREES	ANGLES ±2 DEGREES
FILLETS AND RADI	FILLETS AND RADI
.003 - .005	(0.07 - 0.13)

DRAWN	DATE	MFG	PKT	REV
CHK'D	REV	ENGR	RF	REV
APP'D	REV	ENGR	RF	REV
SYSTEMS DRAWING				
MODEL 200M184				
SCALE: FULL	SHEET 1 OF 2			



APPLICATION	USED ON	VAR

PCB Reproduces Inc. claims proprietary rights in the information disclosed herein. Neither it nor any other person is authorized to reproduce or disseminate this information without written consent of PCB Reproduces Inc.

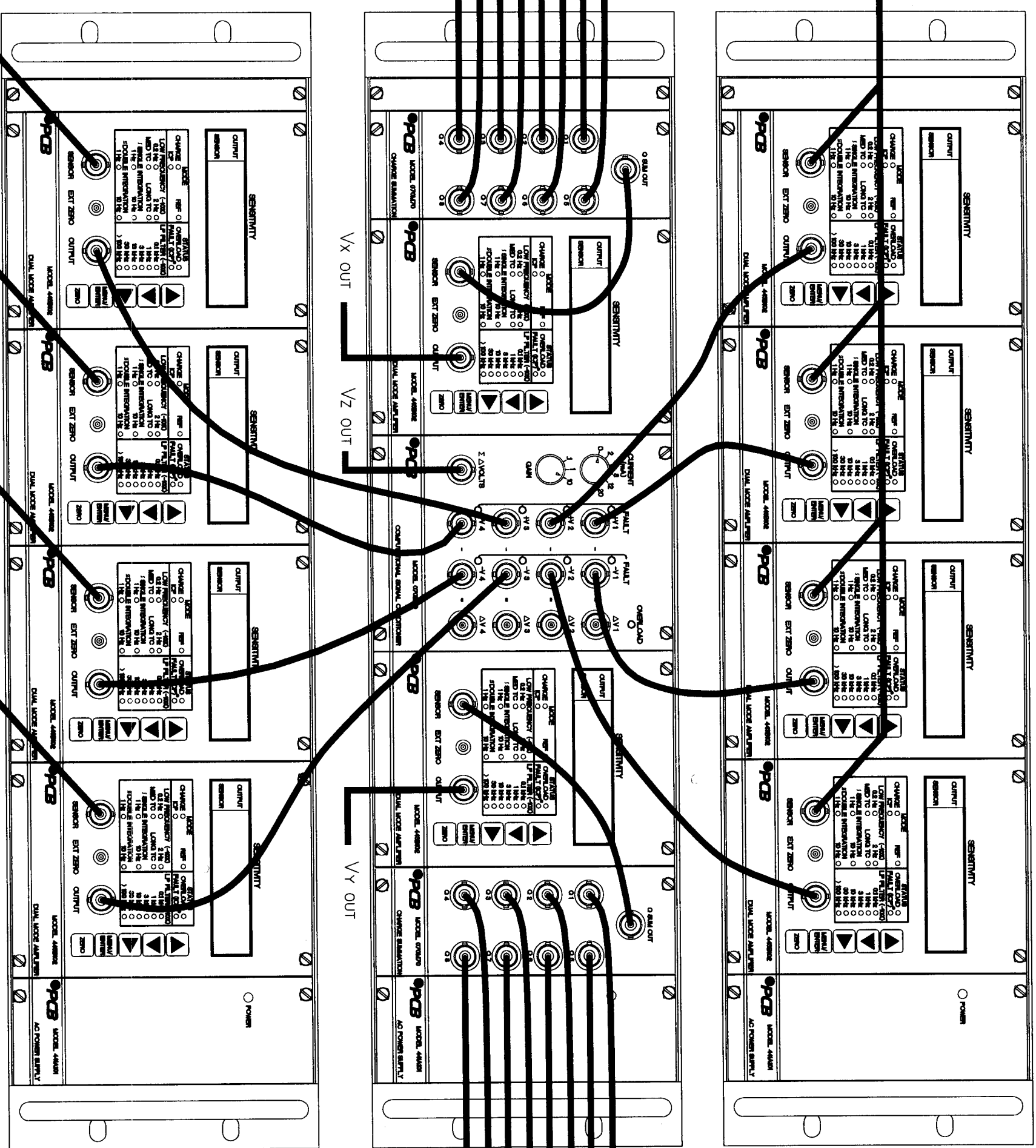
REVISIONS			
ZONE	REV	DESCRIPTION	APP'D
		SEE SHEET 1 OF 2	

10205

QZ 1 THRU QZ 4  
(SEPARATE CABLES BUT NOT SHOWN)

Q X 1  
THRU  
Q X 8

Q Y 1  
THRU  
Q Y 8



QZ 5 THRU QZ 8  
(SEPARATE CABLES BUT NOT SHOWN)

UNLESS SPECIFIED TOLERANCES DIMENSIONS IN INCHES (IN PARENTHESES) DIMENSIONS IN MILLIMETERS

DECIMALS XX ±.01  
XXX ±.005  
ANGLES ±2 DEGREES  
FILLET RADIUS .003 - .005

DRAWN: *W. J. ...* MFG: *PCB*  
CHK'D: *W. J. ...* ENGR: *W. J. ...*  
APP'D: *W. J. ...* TITLE: SYSTEMS DRAWING  
MODEL 200M184

PCB REPRODUCES  
3425 WALDEN AVE. DEPEW, NY 14043  
(716) 684-0001 FAX: SALES@PCB.COM

SCALE: FULL SHEET 2 OF 2