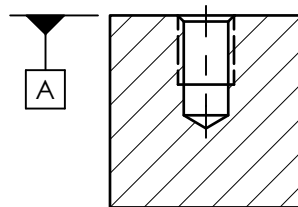
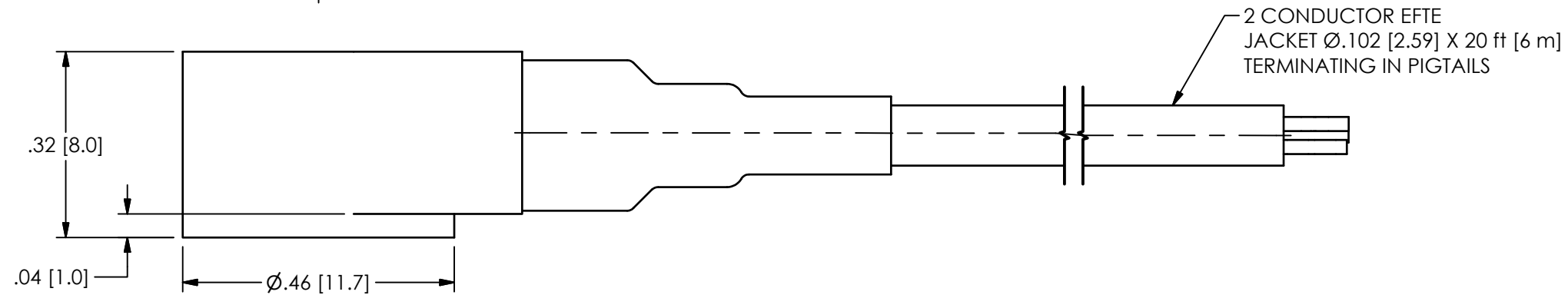
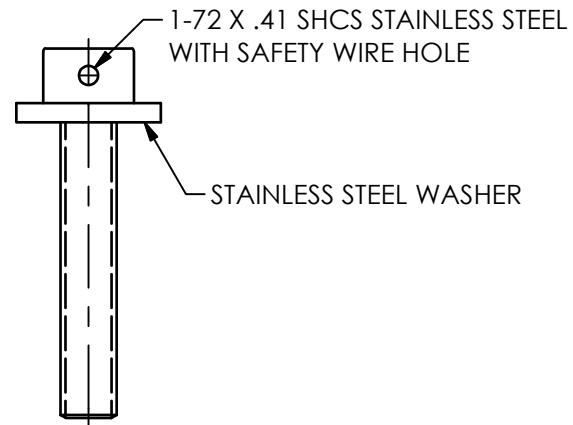
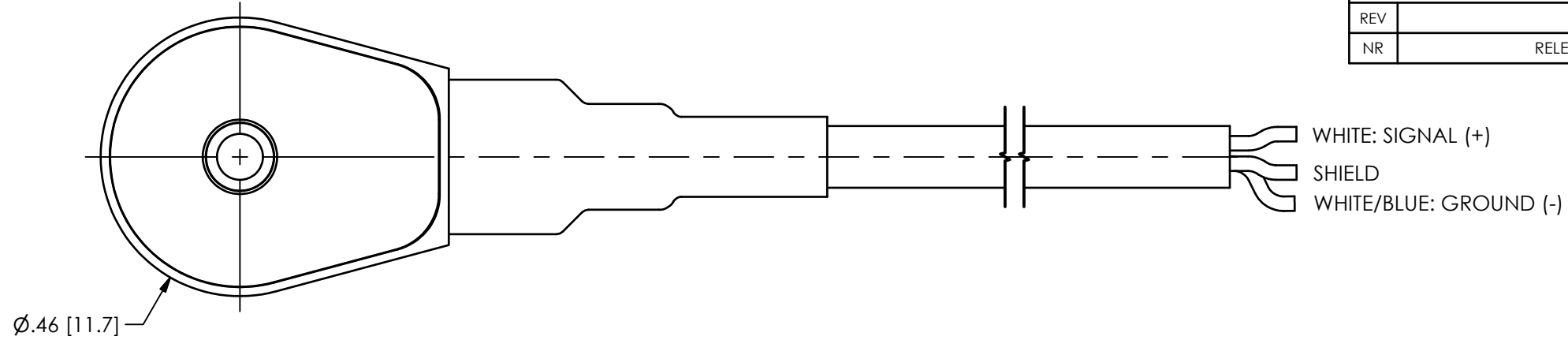


PCB Piezotronics Inc. claims proprietary rights in the information disclosed hereon. Neither it nor any reproduction thereof will be disclosed to others without the written consent of PCB Piezotronics Inc.

68335

REVISIONS

REV	DESCRIPTION	DIN
NR	RELEASED TO DRAFTING	47437



MOUNTING HOLE PREPARATION
 \varnothing .0625 [1.59] ∇ .13 [3.3] ∇ MIN
 1-72 UNF-2B ∇ .09 [2.3] ∇ MIN

- 3.) RECOMMENDED MOUNTING TORQUE 1 TO 2 IN-LBS [11 TO 23 N-cm]
- 2.) MOUNTING SURFACE SHOULD BE FLAT TO WITH .001 [0.03] TIR OVER \varnothing .75 [19.1] WITH A MINIMUM FINISH OF 63 [1.6] FOR BEST RESULTS
- 1.) DRILL PERPENDICULAR TO DATUM "A" TO WITHIN \pm 1'

UNLESS OTHERWISE SPECIFIED TOLERANCES ARE:		DRAWN		CHECKED		ENGINEER	
DIMENSIONS IN INCHES	DIMENSIONS IN MILLIMETERS [IN BRACKETS]	JDM	11/14/17	JDM	11/14/17	RMB	11/14/17
DECIMALS XX \pm .01 XXX \pm .005	DECIMALS X \pm 0.3 XX \pm 0.13	TITLE INSTALLATION DRAWING MODEL 355A44 RING ACCELEROMETER					
ANGLES \pm 2 DEGREES	ANGLES \pm 2 DEGREES						
FILLETS AND RADII .003 - .005	FILLETS AND RADII 0.07 - 0.13	CODE IDENT. NO. 52681		DWG. NO. 68335		SCALE: 4X SHEET 1 OF 1	

PCB PIEZOTRONICS™

3425 WALDEN AVE. DEPEW, NY 14043
(716) 684-0001 E-MAIL: sales@pcb.com